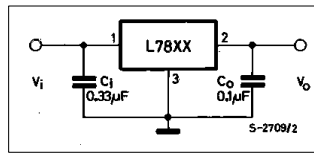


HP 200LX Car charger circuit

using a **L7812CV** with 330nF on input and 150nF on output side

200LX needs $V_{out} > 10,0V$ to switch on
 At abt. $V_{out} < 9,3V$ it switches off



V_{in}	V_{out} idle	V_{out} with 200LX	V_{out} with 200LX charging batteries	Temperature of L7812CV
9,0 V	8,0 V			
9,5 V	8,5 V			
10,0 V	9,0 V			
10,5 V	9,5 V	9,0 V		
11,0 V	9,9 V	9,4 V	9,3 V	warm
11,5 V	10,4 V	9,9 V	9,8 V	warm
12,0 V	10,9 V	10,4 V	10,3 V	warm
12,5 V	11,3 V	10,8 V	10,7 V	warm
13,0 V	11,8 V	11,3 V	11,2 V	warm
13,5 V	11,8 V	11,7 V	11,6 V	hot
14,0 V	11,8 V	11,8 V	11,8 V	hot
14,5 V	11,8 V	11,8 V	11,8 V	very hot
15,0 V	11,8 V	11,8 V	11,8 V	very hot

