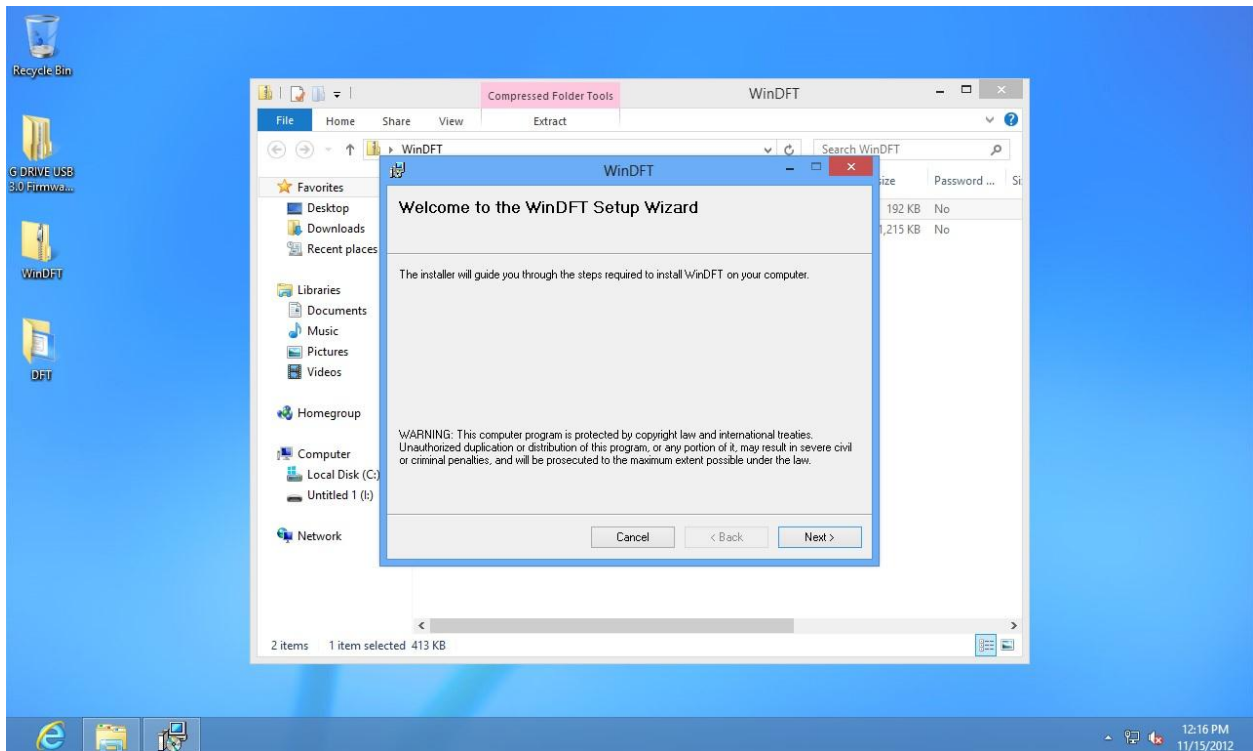


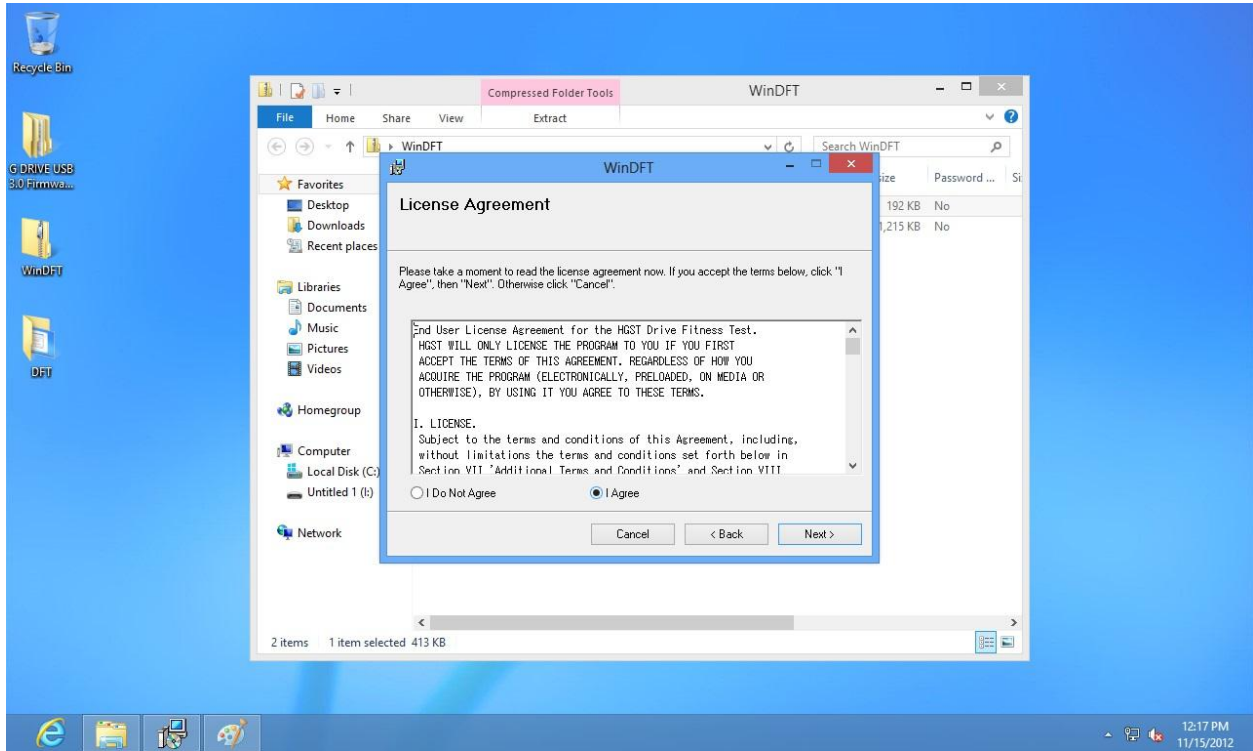
## **WinDFT Setup**

WinDFT can be downloaded from the Downloads section of HGST.com. Once downloaded, please follow instructions below.

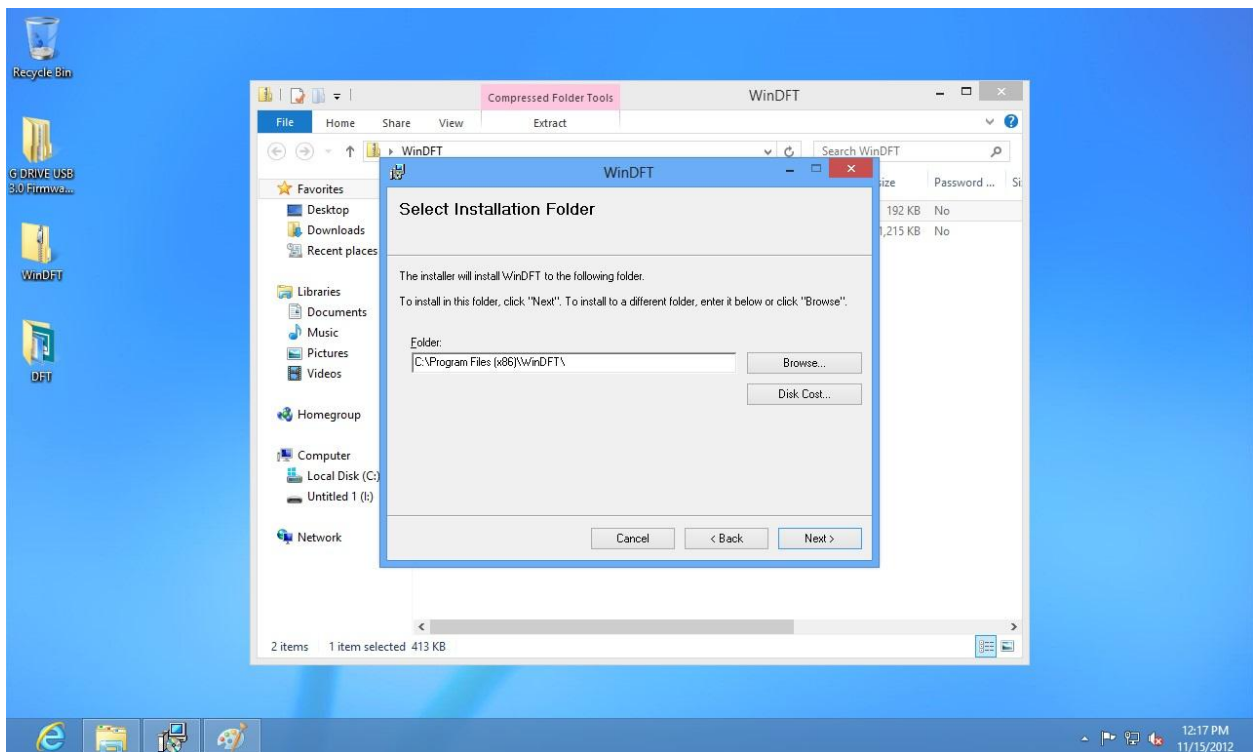
1. Double click the Setup.exe. Click Next.



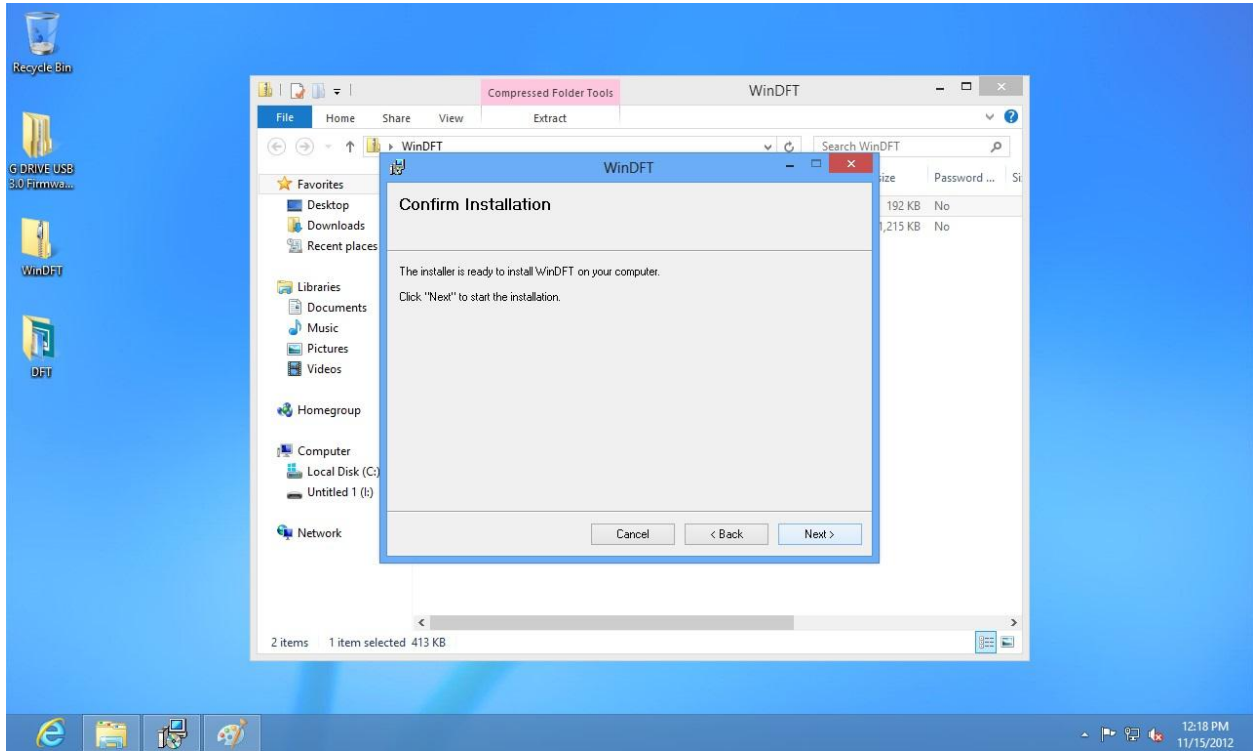
2. Click on I Agree for License Agreement, and then click Next.



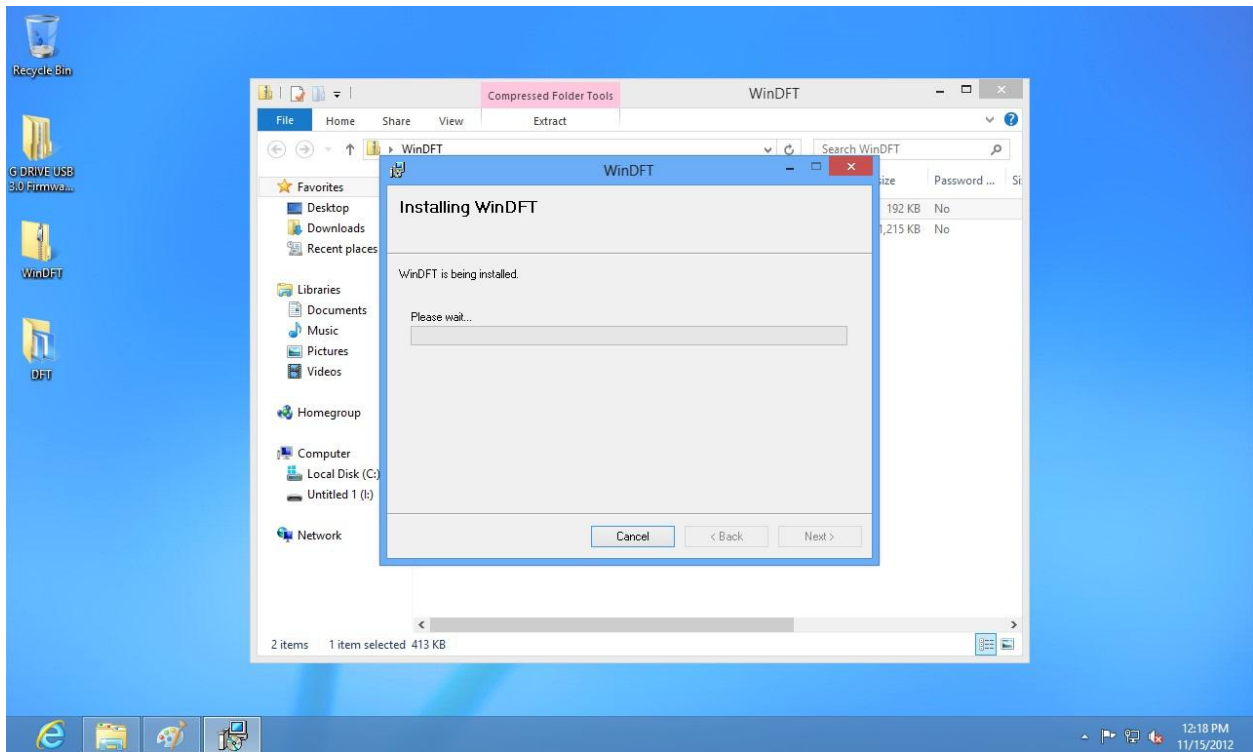
3. Click Next to install the WinDFT to your Program Files folder



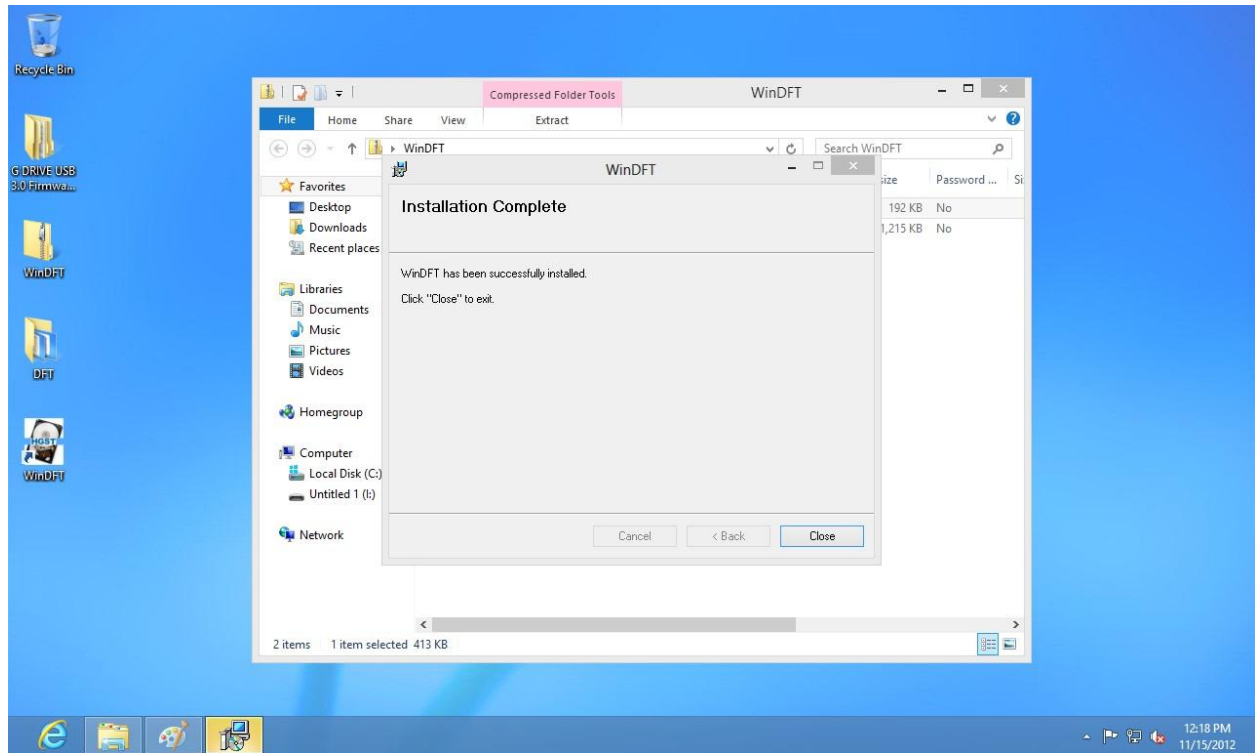
4. Click on Next to Confirm Installation



5. WinDFT will begin installation to your computer



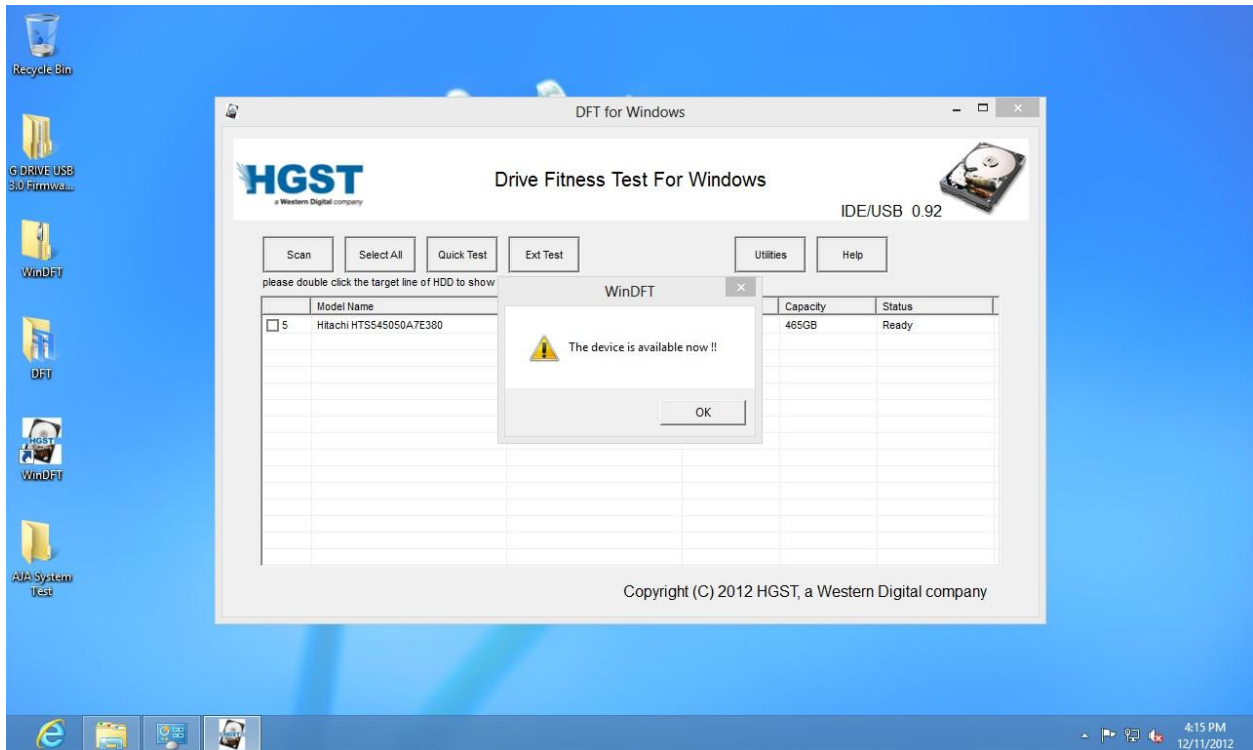
6. After a few moments, WinDFT will complete the installation. You will then be able to use the utility to test your drives.

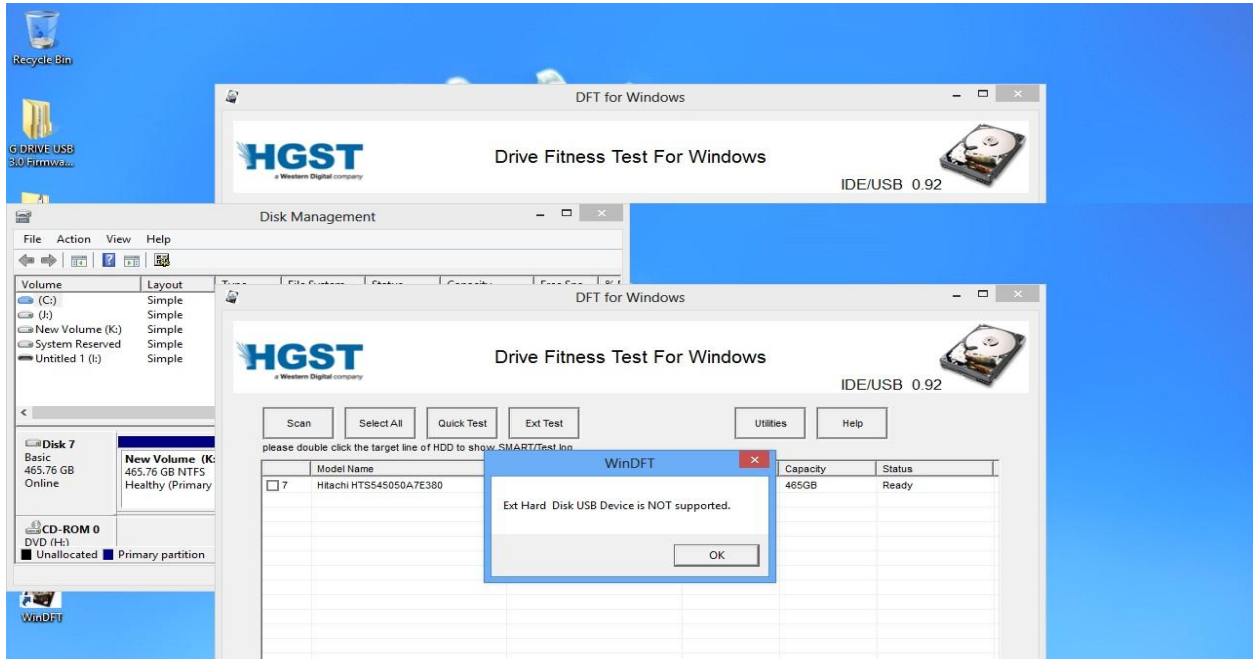


7. You have completed the installation process of WinDFT, now go to your program files where you saved Win DFT and select the utility to begin the test. To use WinDFT please follow the steps below.

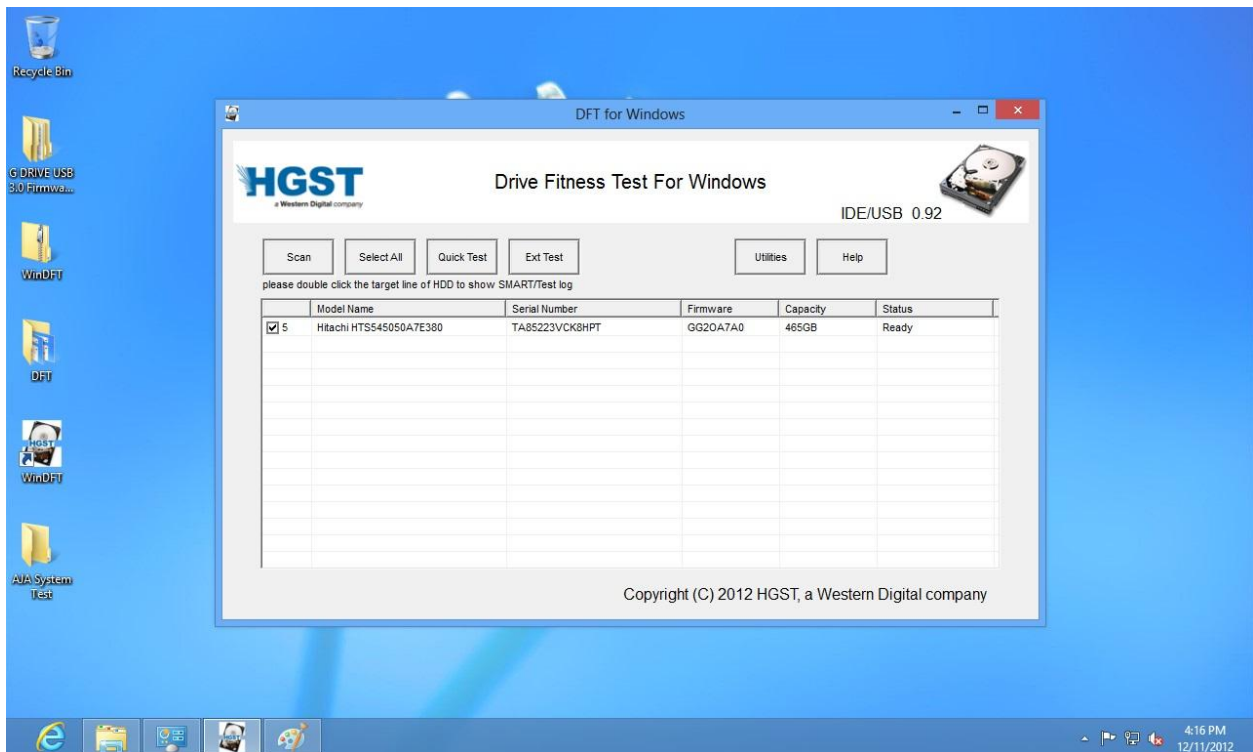
## Using WinDFT

1. Launch WinDFT from your Program Files and WinDFT will automatically search for devices that are compatible with the utility. If a device is plugged in and it is not listed, you can click on the Scan button for WinDFT to perform a further search. If a hard drive that is not supported is plugged in, you will get a warning message that the device is not supported and it will not be listed. Please note: WinDFT is not designed to run on your primary operating drive.

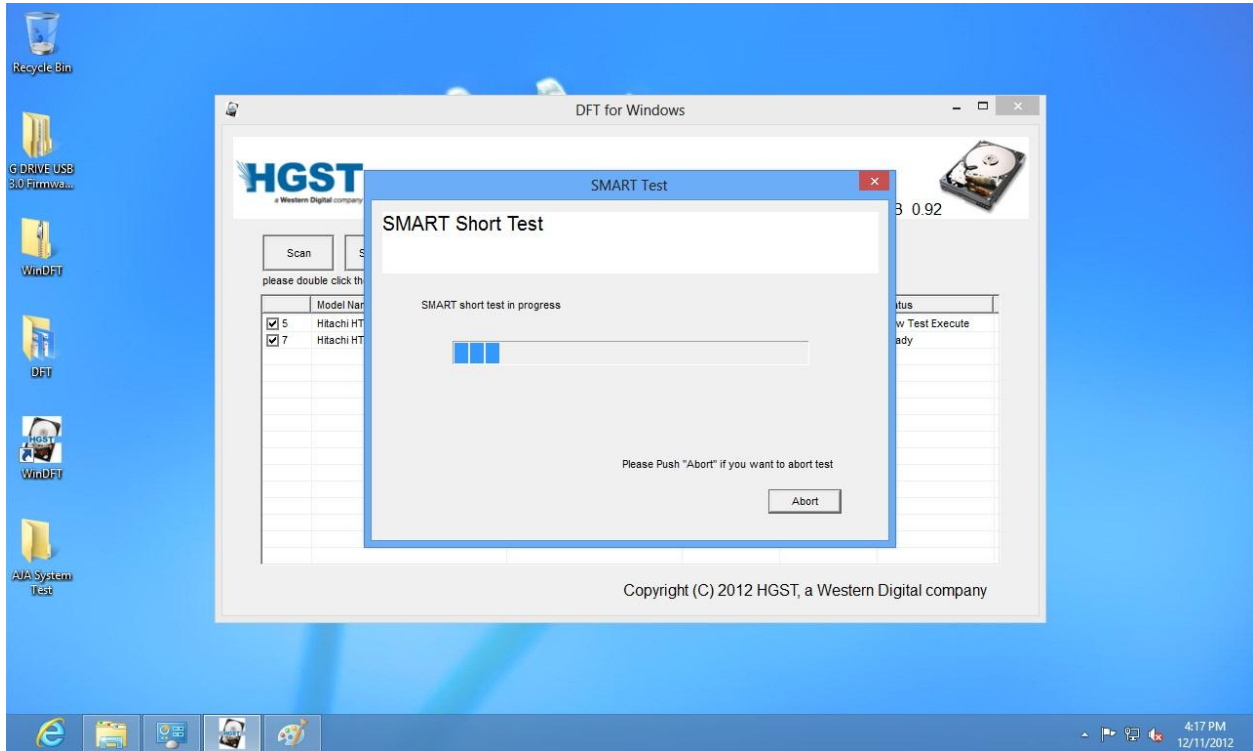




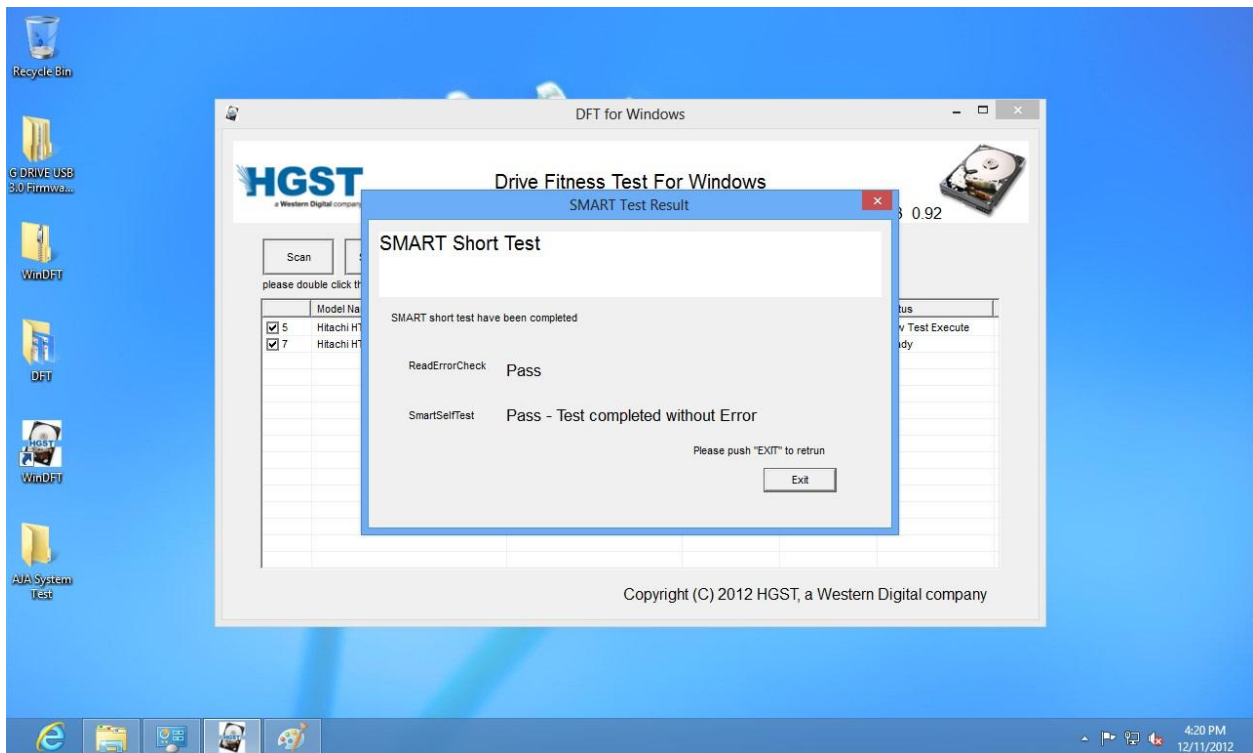
2. Select the device that you want to run the test on.



3. Click on Quick Test to run the Quick Test, or Ext Test to run the Extended Test. The Quick test should take a few minutes to run where as the Extended test will take much longer depending on the capacity of your drive.

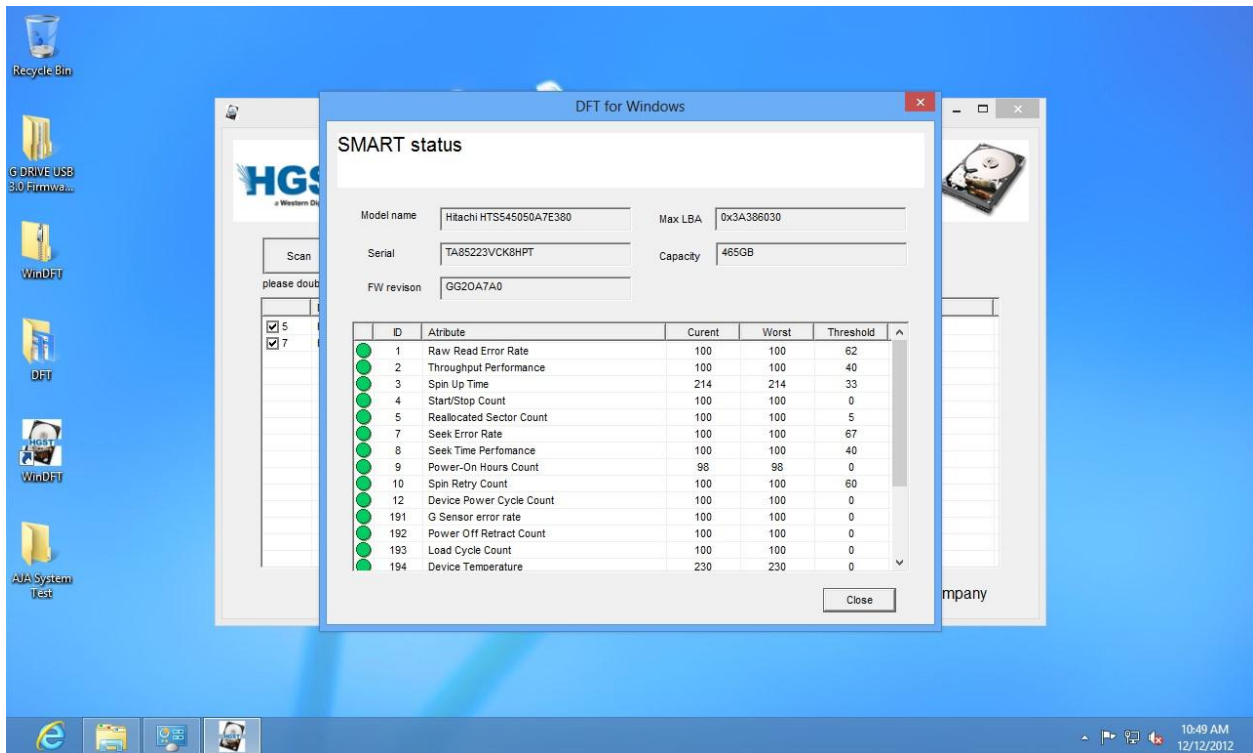


4. Once the test has completed, you will see a message like below, indicating either Pass or Fail. Should you receive a Failed message you can initiate your Return Material Authorization (RMA) [here](#).





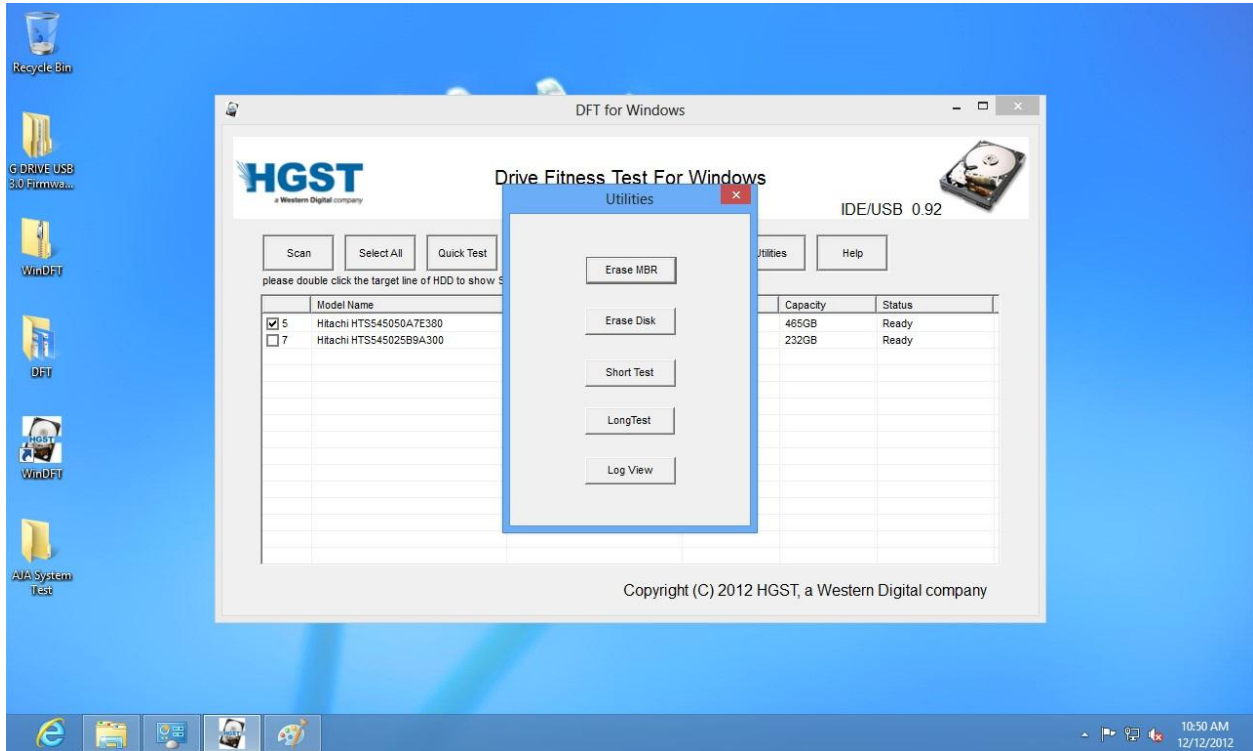
5. For SMART status of the drive, double click on the drive you wish to see status on.



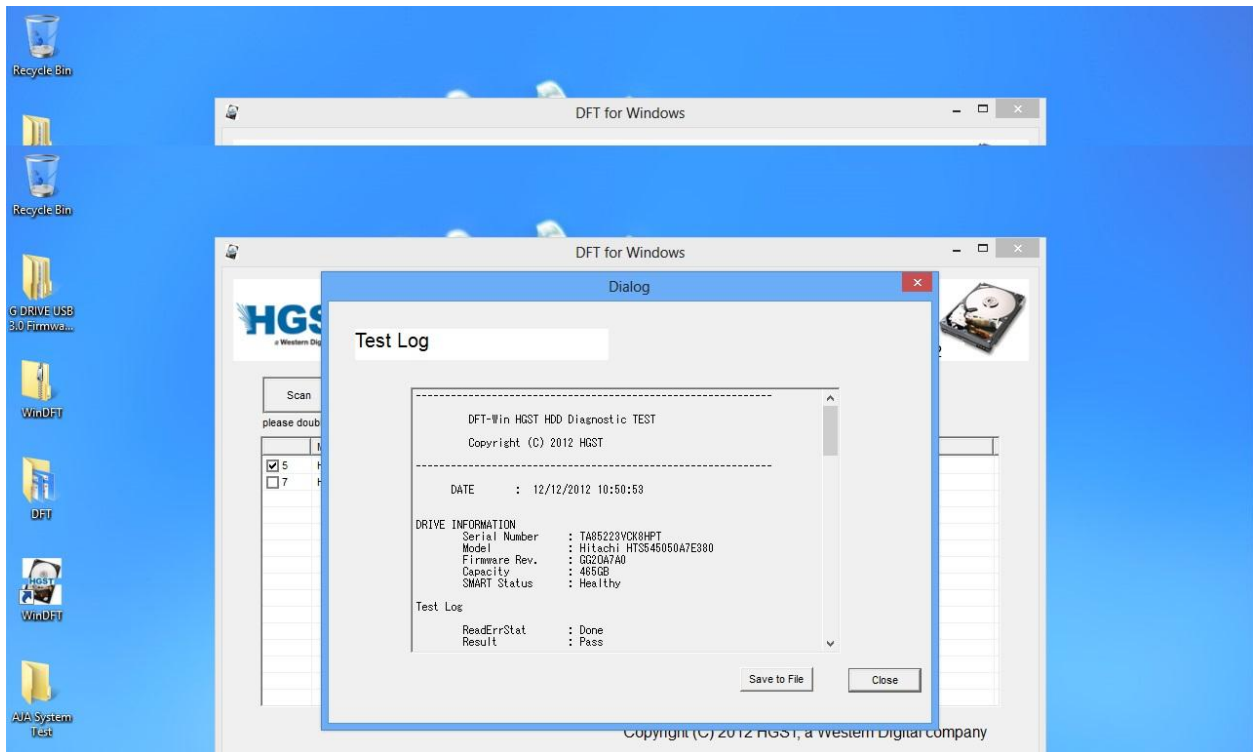
6. If you would like to run WinDFT Utilities on a drive, click on one of the drives so it has a checkmark next to it, and click on Utilities.

Note: In Utilities, you have the option to Erase MBR and Erase Disk. The difference between the two is that Erase MBR will only delete the partition of the drive while Erase Disk will write 0's to the entire drive. Erase Disk will take a lot longer to complete. **Both will erase ALL the data on the drive so be careful and use only if you are sure you want to erase ALL the data on the selected drive.**





7. To check the Log file for the tests completed, click on Log View.



Notes:

- If more than one drive is checked when you click on Quick Test or Ext Test, it will run that test for all of the drives in that order.
- If WinDFT is open and you plug a USB drive, it will automatically scan that drive to see if you can run WinDFT on it. WinDFT skips the OS hard drive and only scans USB and internal hard drives that are set up as a secondary device.